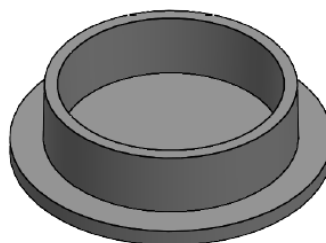
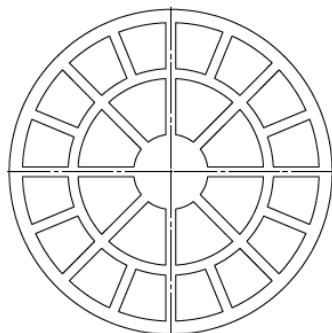
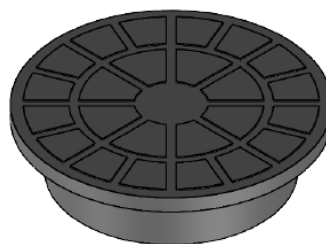
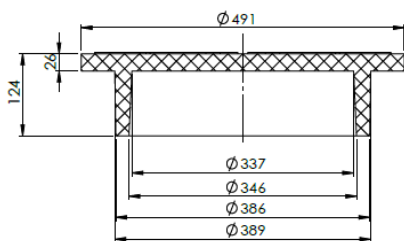


Protective cover T4/400/N

Intended for:

- Protection of plastic wells (shaft pipes) DN/ID 400 mm against contamination, rainwater inflow

Protective cover for DN/ID 400 manholes



3. Application:

A non-overrun plastic protective cover is an alternative and economical protection of the sewage system of chambers with a $\geq \varnothing 400$ mm opening against contamination, the inflow of rainwater, accidents. Laid directly on the shaft pipes DN/ID 400. Resistant to erosion, weather conditions and operating environment factors. The plastic covers do not damage the equipment for mowing the roadway. They do not contain metal elements, are not exposed to theft.

For temporarily covering the holes in the TX/765/410/80 and TX/765/395/80 adapters before installing the drains.

For use in communication engineering in the right-of-way in the excluded area, not heavily loaded with pedestrian and vehicular traffic, expressways, motorways, on slopes.

Technical parameters of the T4/400/N protective cover

| | | |
|--|------------------------------------|---|
| Compressive strength. Class | 200kg | PN-EN 124-1 07-2015 |
| Tensile strength | 3Mpa | PN-EN ISO 527-1:2012 |
| Degree of resistance to frost in water | F150(-2%) | PB IBDIM PB/TB-1/23 |
| Degree of frost resistance in 2% NaCl | F50(-2%) | PB IBDIM PB/TWm-36/98 |
| Absorptivity | <0,2% | PN-EN ISO 62:2008 |
| Mechanical loss | 0,33 tg | |
| Hardness according to Shore | >46 | PN-EN ISO 868:2005 |
| Dimensional tolerance of the product | ± 5mm in diameter, ± 3mm in height | |
| Support surface | 600- cm ² | |
| Thermal resistance | -30° C do +60° C | In continuous work conditions. |
| Short-term thermal resistance 170° C | 2h | In the conditions of installation in the bituminous surface |
| PVC / PE material | 80%/weight 11,4kg | PN-EN 15346 2009 |

Product reference documents:
National Technical Assessment No. IBDiM-KOT-2017/0047 3rd edition
National Declaration of Performance No. 03 / EW / 22
Code CN 39259090

General assembly instructions:

- T4/400/N protective covers mounted directly on the shaft pipe of the DN 400 manhole should be raised above the level of the surrounding ground, the surface of about 8 cm in order to protect the sewage system, septic tanks against the inflow of surface waters.
- The location of the chamber with a protective cover should preclude accidental running of vehicles onto the chamber.
- The protective cover can be additionally secured against opening by screwing the cover to the shaft pipe